



HEALTHY HINTS



WHAT IS CANINE PARVO VIRUS?

Parvovirus is a **HIGHLY CONTAGIOUS** virus that attacks the intestines and causes sloughing of the inner layers of the intestine. The virus is minute but extremely hardy and can survive in the environment for months or even years.

WHO IS AT RISK?

Parvovirus is contagious to dogs only – not to cats or people. This potentially deadly disease is usually more severe in young dogs less than 6 months of age, old dogs and breeds such as Rottweilers and Dobermans seem to be more susceptible. Several factors such as age, environment, stress, parasites, vaccination and general health status of each individual dog will determine the severity of the illness.

ROTTWEILERS



DOBERMANS



SYMPTOMS

Clinical signs include: depression, severe vomiting, loss of appetite, fever, profuse smelly and bloody diarrhoea. Infected animals rapidly dehydrate and severe cases progress to shock and death.

TREATMENT

There is no specific treatment for canine parvovirus. The goal is to support the animal until the infection has run its course. Early fluid therapy is the most important factor in the treatment. Dogs showing any of the above symptoms should be taken to a veterinarian immediately. With most dogs there is at least a 70 % survival rate. Early veterinary care is essential for your pet's survival.

HOW IS IT TRANSMITTED?

DIRECT transmission occurs when an infected dog comes into contact with a susceptible animal. The virus is found in heavy concentrations in the infected dog's stool. The main source of infection is the faeces of infected dogs.

INDIRECT transmission of the virus occurs via hands, shoes, clothing and other inanimate objects such as food and water bowls and bedding. The virus can also be transferred via the coat and pads of dogs.

EVERYTHING IS CONTAMINATED – WHAT NOW?

Because it is such an extremely tough virus to destroy, many people want to know exactly how to disinfect an area that has been contaminated and how long they must wait before safely introducing a new dog, especially a puppy, to a previously contaminated area.

Enormous amounts of parvovirus are shed through the stool of infected animals during the weeks following exposure. Infected animals therefore pose a huge potential for environmental contamination.

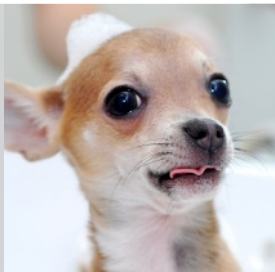
It is important to realize that no environment is free from this virus unless it is regularly disinfected. A parvo viral infection can be picked up ANYWHERE, although it is easier to contract where an infected dog has been, simply because of the larger amounts of virus in that contaminated area.

PREVENT CROSS-CONTAMINATION

Before introducing a new puppy, or on the return of a previously infected dog from the vet prevent other dogs becoming infected by using the following:-

- Bath ALL dogs being discharged from hospital with F10 Germicidal Treatment Shampoo to lower the amount of virus particles on the coat.
- Ensure the new puppy is fully vaccinated, keeping in mind that dogs remain highly susceptible to Parvo until 2-4 weeks **after** the last injection of the immunization series. Consult with your local veterinarian regarding vaccinations schedules.

BATH



VACCINATE



- No disinfectant (not even the few really good ones!) can effectively function in the presence of debris (organic matter) such as food, faeces, urine, blood, saliva, grass, soil, animal dander. Neglecting to properly clean prior to using these products will result in a false sense of security and a major waste of money.
- Your aim when cleaning and disinfecting animal housing, bedding, food and drink bowls, equipment and utensils is to reduce the microbial load to the lowest and therefore safest practical level **on a daily basis**.
- Prevent cross-contamination by cleaning and disinfecting throughout your household or the holding or breeding facility.

CHOICE OF PRODUCTS

Do not mix products! Some combinations can be really dangerous e.g. ammonia and bleach.

Safety first! Products such as the F10 range can be used on any surface AND in the presence of all animal species.

There is no need to put up with irritating fumes and special safety precautions – there are products available that can do the job without you having to look like you're about to venture into space.

Excess foam actually hampers the cleaning process because it traps the dirt so go for low-foaming products.

Always follow manufacturer's instructions with regard to dilution rates, method of application, contact times and safety precautions

CHECK THAT LABEL!

- Do not be misled by sales-talk on labels! All disinfectants and products used to eliminate and treat animal diseases must by Law be registered in terms of the Department of Agriculture, Stock Remedies Act 36 and given a registration number. This is for the protection of the user. All Act 36 products have been independently assessed by veterinarians employed by the Department of Agriculture or by assigned specialists. Label claims and directions for use have been specifically approved and will, where necessary, be limited to only those conditions that they are capable of dealing with effectively and safely - **If it doesn't say its effective against Canine Parvovirus, it isn't.**

**PREVENTION IS ALWAYS
BETTER THAN CURE!**

**DISCUSS A VACCINATION
PROTOCOL WITH YOUR
VET TODAY AND KEEP
THE FIO HANDY!**

RECOMMENDATIONS FOR USE IN CASES OF CONTAGIOUS DISEASES

APPLICATION	FREQUENCY	DILUTION /10 LITRES	MINIMUM EXPOSURE
HOUSING Isolate all diagnosed and visibly infected animals immediately. Infected puppies must be isolated with the mother. Remove all bedding and equipment (e.g. toys, brushes, water and feed bowls) from cages, floors. Soak bedding and equipment in F10SC before washing. Hang to dry / tumble dry. Wash water and feed bowls with warm water and F10SCXD, spray with F10SC and leave to dry. Wash all surfaces (work benches, floors, tables, walls, tiles) with F10SCXD.	Daily Daily Daily	100 ml 100 ml 100 ml	15 min Leave to dry Leave to dry
STAFF Handling of animals should be limited and involve as few people as possible. Staff movement must be restricted to designated areas. Infected animals and areas should be handled last to avoid cross-contamination. Protective clothing should be worn and discarded or washed and disinfected daily. Proper hand decontamination (running water, F10 antiseptic liquid soap and paper towel to dry or use F10 Hand Gel) must be done after any animals or possible infected material such as bedding had been handled.	Daily In between handling animals	100 ml 4 ml as is	Soak 15 min, hang to dry 30 sec
GENERAL Grass should be kept short and exposed to as much sun as possible. Carrier boxes must be washed (F10SCXD) and disinfected (F10SC) after every use and left to dry. All cleaning equipment (mops, cloths, brushes) must be washed with F10SCXD and disinfected with F10SC at the end of each day.	After every use At the end of each shift	100 ml 100ml	Leave to dry Hang to dry
ANIMAL TREATMENT (Where applicable) Wash ALL animals immediately with F10 Germicidal Treatment Shampoo to prevent the disease from spreading. Repeat for up to 3 treatments on every other day on infected animals and once a week on non-infected animals. Apply F10 Germicidal Barrier Ointment to affected lesions once daily. Remove all organic material and ointment with F10SC (1:250) before re-applying the Ointment.	Every other day or as prescribed by veterinarian	As is As is As is	Leave 15 min rinse Leave 15 min rinse Leave to dry -

F10[®]

PRODUCTS



VETERINARY PRACTICE



Health and Hygiene

Manufactured by: Health and Hygiene (Pty) Ltd (Reg. No. 94/00853/07)
PO Box 906, Florida Hills, 1716, South Africa
Tel: +27 11 474 1668 • Fax: +27 11 474 1670 • www.healthandhygiene.co.za • www.f10products.co.za